

AMR & AGV FLEET MANAGEMENT

Fast Rollouts & Even Faster Realised Payback; KINEXON Fleet Management for Your Mixed Robot Fleet

Manage your Fleet with One Unified KINEXON Fleet Manager

- Quick adoption of new vehicles and high scalability within and across sites
- Highly efficient and flexible mobile robot operations including routing, traffic management, and capacity utilization
- Fast and standardized IT-integration with existing ERP, MES or WMS

Maximize Fleet Flexibility and Connectivity

- **Universal Compatibility:** Integrates all AMRs & AGVs seamlessly.
- **Standard Compliance:** Fully adheres to VDA5050 standards.
- **Vendor Freedom:** No lock-in, reducing costs.
- **Active & Passive Tracking:** Utilizes diverse location services (RTLS, BLE, V-SLAM).
- **SAP Integration:** Smooth synchronization with SAP systems.
- **Automation:** Eliminates manual setup with up-to-date data.

Solution Benefits

Lower Integration Costs

40% reduced integration efforts due to out of the box integrations

Reduced Rollout Costs


Over 30% decrease in operator training costs for new vehicles

Realize Better Efficiency

Efficiency **increase of 50%** in the fleet output due to KINEXON enabled optimization

Use Cases	Material Transport & Handling	Inventory Management Automation	Order Fulfilment Orchestration	Real-Time Task Assignment	Adaptive Traffic Management
	Dock Management	Maintenance & Monitoring	Energy Management	Safety & Collision Avoidance	Data Analytics & Optimization
Industries	 Automotive	 Aerospace & Defense	 Machinery & Equipment	 Intralogistics	

Market-Leading AMR & AGV Integrations

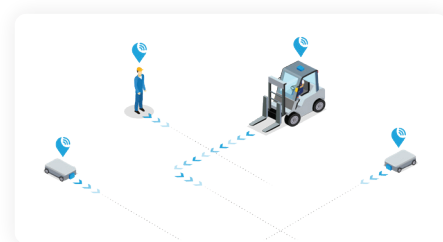
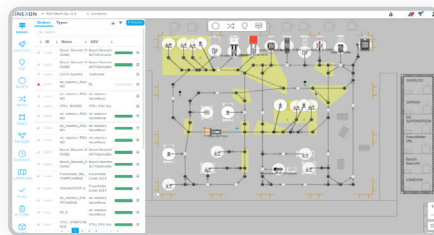
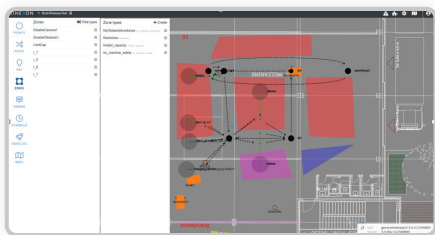


Want to talk? We do, too. [GET IN TOUCH HERE](#)

www.kinexon.com/solutions/amr-agv-fleet-management

[Book a Demo](#)

The KINEXON Fleet Manager



Best in Class Route Planning

- Real-time adaptation to changes
- Simplified management for multiple vehicles
- Consistent operations across different robot types

Automated Transportation Orders

- Boost productivity by automated order generation
- Customize routes for efficient material flow
- Integrated with existing systems to better orchestrate jobs

Real Time Location for Non-Smart Vehicles

- Connect your forklifts or tuggers seamlessly
- Operator controlled applications for jobs
- Real time vehicle updates continuous improvement

How Continental Achieved 250% ROI Optimizing AMR & AGV Fleet Operations with KINEXON



Strong ROI

Over **250%** return on investment in less than 5 years

Highly Scalable

Over **350,000** orders processed annually per site

Always Available

24/7 Operations across **14** production lines

“Implementing KINEXON Fleet Manager for our Autonomous Mobile Robots has transformed our operations beyond our expectations. With the power to orchestrate and automate our robot fleet, we’ve achieved an additional push for our operational efficiency and accuracy. Our tasks are seamlessly completed, and errors have become a thing of the past”



Prof. Dr.-Ing. Tobias Bornemann
Senior PM AMR at Continental

Specifications

Centralized Fleet Control	Up to 250 robots
Order Handling	Prioritization and handling of orders among multiple robots
Battery Level Control	Monitoring of robot battery levels and automatic handling of recharging
Traffic Control	Coordination of limited capacity zones with multiple robot intersections

KINEXON is a registered trademark of KINEXON GmbH. All other trademarks are property of their respective owners.

©KINEXON GmbH, August 2024 | PUBLIC - Unlimited distribution

Want to talk? We do, too. [GET IN TOUCH HERE](#)

www.kinexon.com/solutions/amr-agv-fleet-management

Book a Demo