

# AEB

Across all borders

## Transportation Management System for global success

All modes. All transports. Inbound and outbound. Understand, optimize, and execute your local and international transportation processes in one platform.





## 7,000+ satisfied companies – become one of them

Transportation management is a matter of trust – especially in times of extreme volatility and uncertainty. So it's good to know that over 7,000 businesses around the world put their trust in AEB software. That we have been optimizing our customers' supply chains for over 40 years. That AEB is owned by its employees, and that these employees are dedicated to its sustainable growth – for a successful long-term collaboration with customers and partners.

**Your IT Partners**

Salesforce ARRIBA Skywise  
ADDISON SupplyOn

... many more

**Your ERP & WMS Systems**

SAP S/4HANA® SAP® EWM Manhattan Infor  
Oracle Microsoft IFS Consafe Logistics EPG

... many more

**Your Suppliers & Customers**

tracking app supplier app customer portal returns

**AEB Intralogistics**

WMS Multi-Carrier Shipping Loading Dock

**AEB Transportation Management System**

Trade Compliance & Export Controls Transport Planning & Optimization Transport Execution Supply Chain Visibility & Supply Chain Collaboration Freight Cost Management Carbon Footprint & Optimization Customs Management KPI Reporting, Tracking, Logistics Costs, Data analysis

**AEB Partners**

shipcloud SHIPSTA  
gryn spotcargohub  
CUSTOMS HEROES EcoTransIT  
... many more

**Global Trade Compliance**

DOW JONES RISK & COMPLIANCE Mendel

... many more

**Carriers & Networks**

DHL FedEx DACHSER Intelligent Logistics DB SCHENKER ups GLS.  
DSV GEODIS Cargoline KÜHNE+NAGE

... 300+ more

**Customs Direct Filing**

DE SE NL BE DK GB IE  
AT CH FR PL

... and Brokers

# The centralized cloud platform for supply chain collaboration

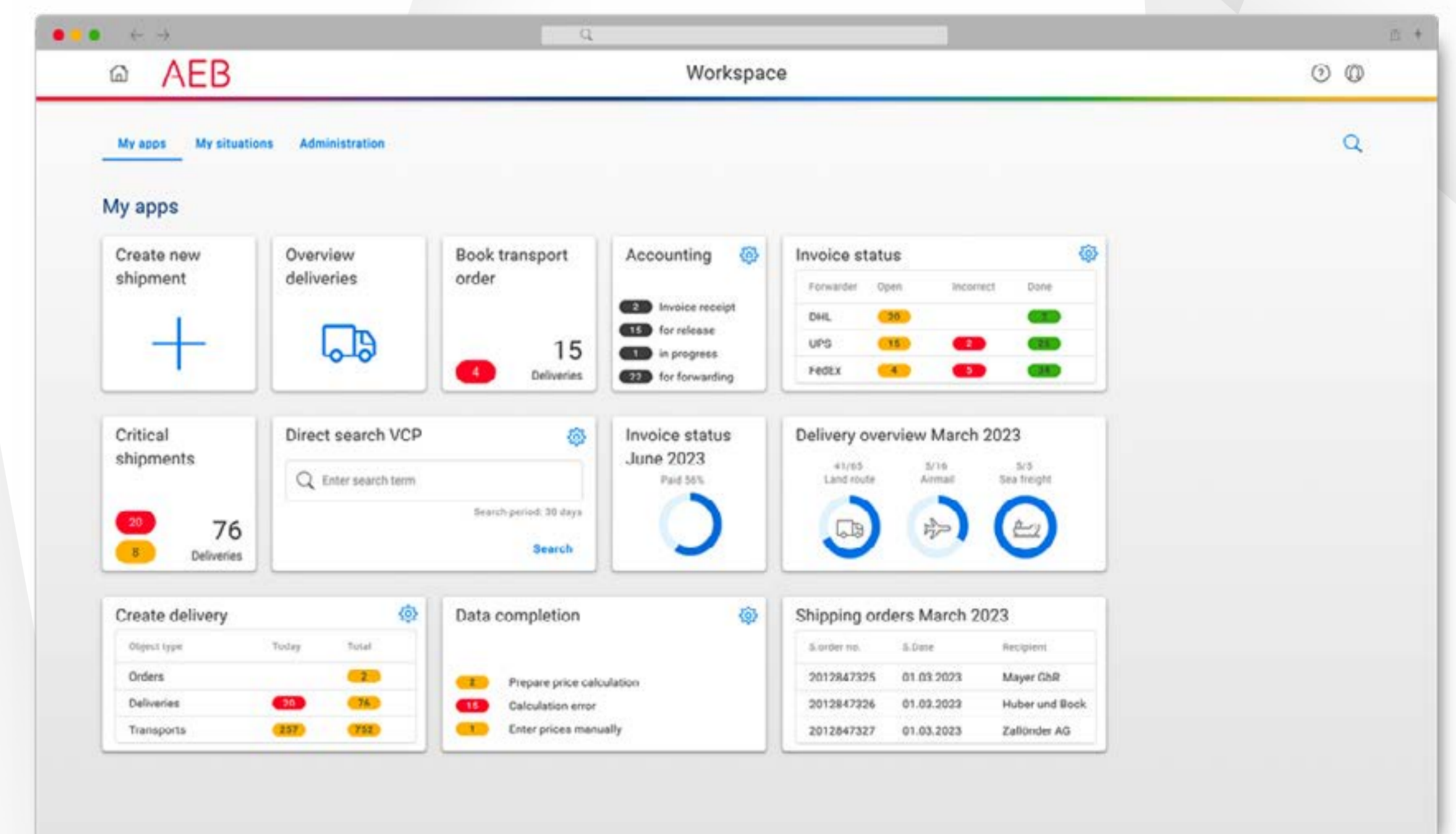
AEB transport management software enables networked collaboration with customers, suppliers, partners, and other supply chain players. For a smoother flow of information and greater visibility. And for process automation of up to 100%.



# Enhanced supply chain visibility and collaboration

Centralized control and visibility for enhanced transport planning and greater agility in responding to disruptions and deviations.

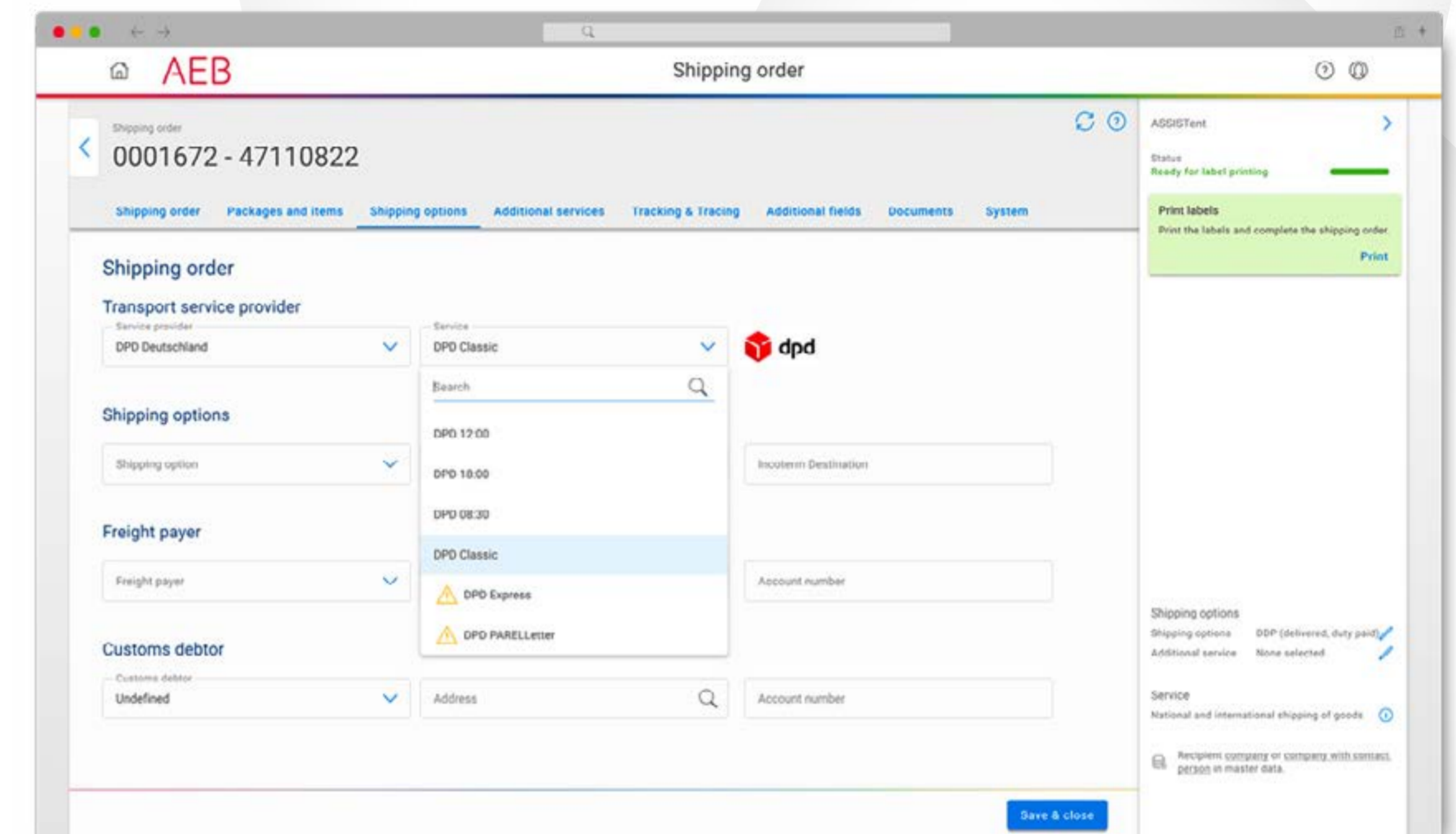
- Single supply chain visibility interface for all data
- Digital twin for planning and automation
- Control tower for visibility, monitoring, and control across all goods movements
- Comprehensive analytics and business intelligence
- Easily measure, manage, and minimize CO2 emissions



# Smarter transport planning & optimization

Plan the inbound and distribution logistics of your shipments and transports. AEB transport management software supports operational planning when you're consolidating consignments and looking for the right transport routes and partners.

- Automated planning of all transport activities
- Multi-leg planning and selection: Route, mode, carrier, rate
- Automated load consolidation: Freely defined strategies that can be adapted at any time

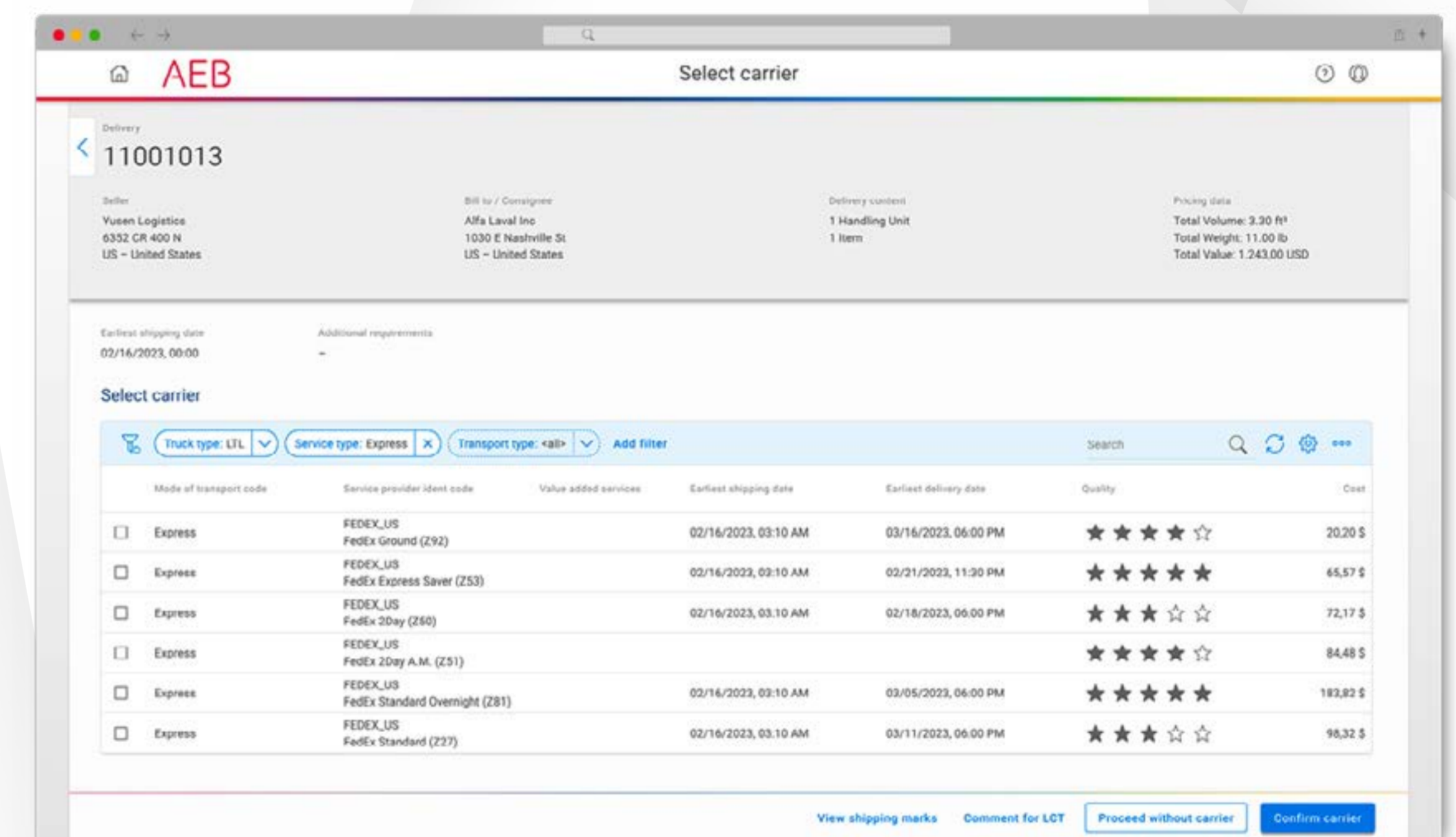




# Transport execution and customs management

Smooth execution for all transport types – inbound and outbound:  
Control and optimize the operational processes, from label  
printing to customs clearance, to deliver reliable supply chain  
performance.

- Comprehensive international carrier network
- Multimodal and intermodal LCL/FCL transports
- Hazardous goods shipping with legal and regulatory compliance
- Customs clearance, broker integration and export controls
- Loading dock and time slot management



# Next-level freight procurement & freight settlement

Digitally manage all freight procurement and settlement processes end-to-end and gain efficiency and visibility while reducing costs significantly.

- Automated tendering & spot buying
- Flexible rate management and freight cost calculation
- Freight simulations and comparisons for greater visibility
- Freight audit for freight invoice verification
- Automated and accelerated freight payment

The screenshot displays the 'External invoice' interface for invoice T2022001289. The main section is titled 'Audit & correct' and includes a filter section with options for 'With difference', 'Without difference', and 'All'. Below the filter is a table of 'Invoice comparison items' with columns for 'Comparison value 1', 'Comparison value 2', 'No. of ext.', 'No. of sett.', 'Est. invoice (net)', 'Settlement (net)', 'Difference', 'Cur.', 'Variance rate', 'Comp. type', and 'VAT gr.'. The table contains four rows of data. A right-hand sidebar shows a status indicator and a message: 'The external invoice "T2022001289, TNT Express Worldwide" is not balanced. The difference of 936.83 EUR must be audited before the settlement can be completed. Audit the external invoice and balance or reject it.' Below this message are links for 'Further information', 'Open settlement', and 'Open invoice auditing scheme'.

Comparison value 1	Comparison value 2	No. of ext.	No. of sett.	Est. invoice (net)	Settlement (net)	Difference	Cur.	Variance rate	Comp. type	VAT gr.
54251		1	0	245,00	0,00	245,00	EUR		U	
8991857		4	4	194,67	43,86	150,81	EUR	343,84	C	
6991886		4	4	236,82	54,45	182,37	EUR	334,93	C	
6991869		4	4	91,29	29,82	61,57	EUR	206,47	C	



# Global transportation management: Reliable. Fast. Efficient.

End-to-end visibility, integrated customs filing, and global transport planning & execution: Optimize your international multi-leg and multimodal shipping processes – from sourcing and planning to execution and settlement.

[aeb.com/tms](https://aeb.com/tms)

Your contact:



Ted Roth

tel: +46-40-668896-4

e-mail: [ted.roth@aeb.com](mailto:ted.roth@aeb.com)

AEB