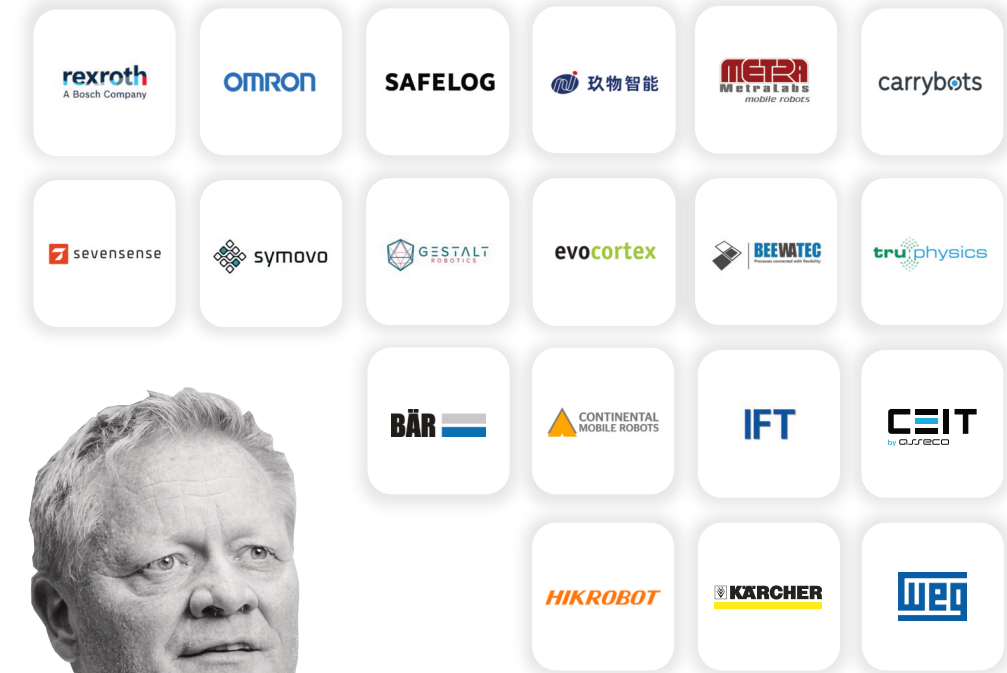


COMPATIBILITY IS THE KEY TO SUCCESS !

AGV/AMR NETWORK:



Being compatible with NAISE means for us that we can jointly create a benefit for our end customers in terms of interoperability for their fleet.

Sven Kaluza | Business Development Manager Robotics | Central Region OMRON

NAiSE GmbH

Pfaffenwaldring 19
70569 Stuttgart
info@naise.eu
+49 (0)711 2529496



INTRALOGISTICS

TRANSPARENT.
FLEXIBLE.
SIMPLE.



FLEET MANAGER **MANUFACTURER** **INDEPENDENT SOLUTION** **FOR ALL PARTICIPANTS**

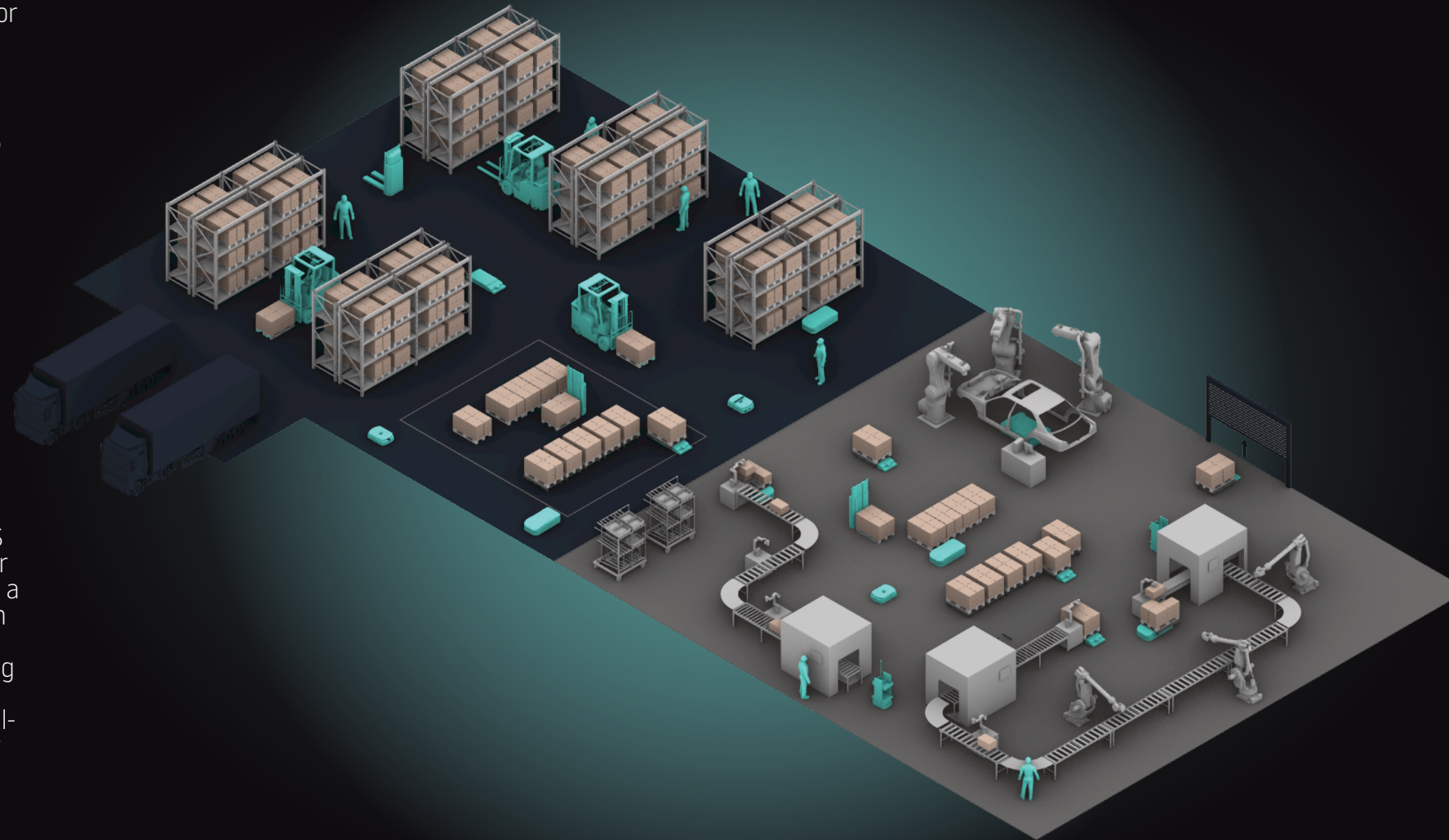
Experience maximum flexibility in your choice and control of the mixed fleet. Our manufacturer-independent solution allows you to integrate any robot, whether via VDA 5050 or native interfaces, and any manually driven vehicle. With our intuitive interface, you can monitor the status of your mixed fleet at a glance. Keep track of all vehicles in real-time and make informed decisions based on precise data. Thanks to our intelligent energy management, your fleet is always ready when you need it.

ORDER MANAGER **INTELLIGENT** **DISTRIBUTION OF** **MATERIAL FLOW**

From receiving orders via third-party ERP/WMS integrations to initiating processes through our intuitive Operator Order Dashboard, we ensure a fully connected workflow. Our holistic approach enables cost-efficient, multi-stage transportation processes, dynamically assigning tasks to robots, forklifts, or conveyors. Track, analyze, and visualize performance data in real-time while benefiting from intelligent anomaly detection and warnings. With one solution, integrate existing technologies and meet automation requirements effortlessly.

NAiSE

THE ALL IN ONE SOLUTION **FOR YOUR INTRALOGISTICS**



TRAFFIC MANAGER **STREAMLINE MATERIAL** **FLOW IN MIXED** **OPERATIONS**

Ensure smooth coordination of diverse fleets within intralogistics environment, reducing collisions and enhancing communication between all traffic participants. It features advanced traffic rules management, hybrid traffic simulation, and detailed traffic analysis for optimal efficiency. Connect and automates industrial components such as gates, lights, and elevators. Our comprehensive solution provides actionable insights to improve decision-making and adapt to future scenarios.

WAREHOUSE MANAGER **REAL-TIME TRANSPARENCY** **FOR YOUR INVENTORY**

Seamlessly coordinate handling units with real-time visibility into inventory and smart station capacity utilization, ensuring an optimized and uninterrupted material flow with smooth warehouse-production integration. With real-time inventory tracking, you always have up-to-date insights into stock levels and material flow. Automate waste management and reduce inefficiencies by assigning transport dynamically. Our intuitive interface gives you complete visibility and control over warehouse operations, helping you make data-driven decisions that optimize space, time, and costs.